



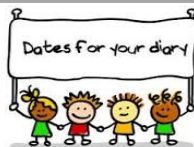
CROWLE C E FIRST SCHOOL NEWSLETTER

December 2023



Dates for your Diary

18th December—Christmas Jumper Day
19th December—Rec to Smart Trees
20th December—Nativity Performance at 2pm and 6pm
21st December—Christmas party day
22nd December—TED Day
8th January—TED Day
9th January—All pupils back to school
10th January—Y1 start swimming
11th January—Y1 Inspire Workshop
15th January—Extra-curricular clubs start back
17th January—Y2 Inspire Workshop
23rd January—Y3 Inspire Workshop
31st January—Y4 Inspire Workshop
1st February—Y1 to Y4 to visit a Mosque (Birmingham)
5th February—KS1 trip to CBSO
6th February—KS2 trip to CBSO
6th and 7th February—Parents Evenings
8th February—Family Service, Crowle Church
8th February—Pupils finish for half term



CHRISTINGLE SERVICE

Thanks to all those families who donated to “The Children’s Society” and also attended the annual Christingle service at Crowle Church.

TOYS FROM THE PAST WORKSHOP



This half term Y1/2 have been learning all about Toys from the Past. As part of this topic, we were delighted to invite Ms. Vale from Hartlebury Museum in to school to carry out a toy workshop with the children. They had the opportunity to look (and touch) a range of toys from the past, talk about the materials they were made from (linking to their work in Science), discuss how children used to play with them and created a timeline of when toys were made and the materials they were made from. Children have really enjoyed their topic on toys.

A MESSAGE FROM THE HEADTEACHER...

The Christmas term is always so busy, but also a real joy. It is always so beautiful to spend this time of year in the company of youngsters; with the building excitement and looming gifts from Santa, tinsel hanging from their hair and Christmas songs ringing out. I truly do love it. However, as an adult we also know that this can be a really difficult time for individuals and families, for a whole host of reasons. This is when a community must (and should) come together to support each other. If you are finding anything difficult at this time; please reach out—to school, or to the community. Remember that I am here to love and serve all our families, and if I can help in any way I can then please do not hesitate to contact me. As always, the pupils have been working really hard alongside all the excitement and this newsletter is just a snapshot of all they have been up to! Wishing you and your family a blessed Christmas, filled with love and good health and I look forward to welcoming you all back in 2024!





Caring, Confident, Committed to Learning



OPEN MORNINGS

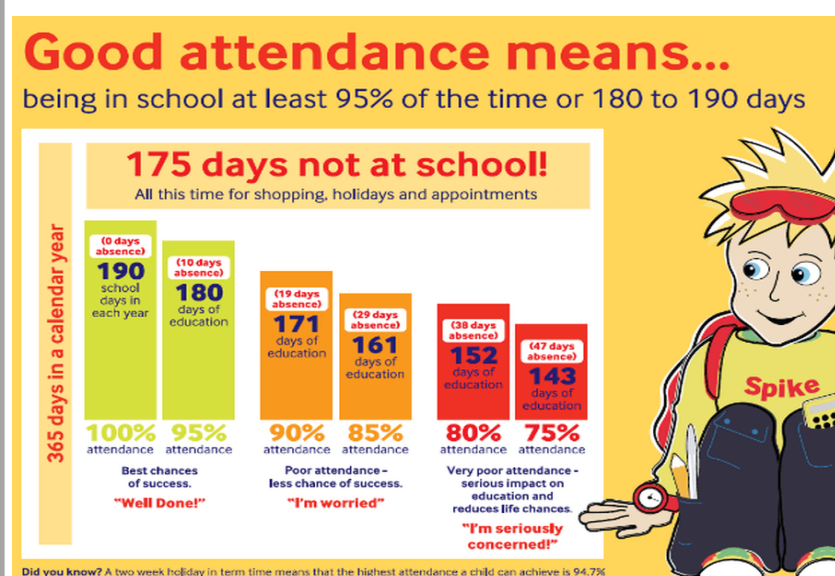
We have had lots of families attend our Open Mornings regarding prospective Reception pupils for September 2024. If you know anybody who is still looking for a school place, please do ask them to contact the office and we would be happy to show them all the wonderful work we do at Crowle CE First School.

CROWLE BONFIRE

A huge thanks to “Friends of Crowle” for their time, energy and dedication to helping organise the Crowle Bonfire (alongside Scouts). It was another really successful event; enjoyed by all. The fireworks were utterly beautiful! It is a fantastic fund-raising opportunity, that offers so much to every pupil in the school. Events such as this are time consuming and headache-inducing, so special thanks to Mrs Gee for her energies used to make this such a wonderful family event. Thanks also to those who donated cakes to be sold also. We will see you there again at the same time next year!



ATTENDANCE



WONDERFUL WORLD—BLACK HISTORY MONTH



This academic year we have introduced the “Wonderful World” box—at the end of each half term children will learn about inspiring individuals who have changed the world, from all different walks of life. Our first one was based on Black History Month—Reception learnt all about Rosa Parks, Y1/2 about Nicola Adams (here they are making their own gold medals to celebrate her successes!) and Y3/4 all about the inspiring life of Claudia Jones (the lady who started the Notting Hill Festival, and had a very exciting life history!).

ATTENDANCE

The Government’s expectation for each child’s attendance at school is **96%**
Our average attendance is currently **97.3%**
Thank you for your support

**EVERY
SCHOOL DAY
COUNTS**



Caring, Confident, Committed to Learning



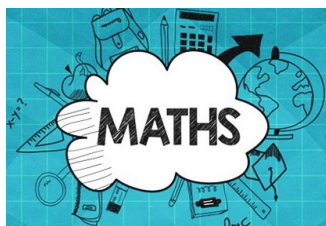
POPPY APPEAL

Thank you so much for donating and supporting to The Poppy Appeal again this year. We raised £86 for this fantastic charity. Your generosity is truly appreciated, especially at a time where many people are finding they don't have much themselves. Thank you.



ART MORNING

On the last day of every half term we have "Art Morning" - which is separate to our Art lessons. Art Morning is learning about a range of artists; young and old, and from every walk of life. Pupils learn about their art, what inspires them and have the opportunity to create art work in the style of the artists they have studied. All plans can be seen online.



MATHS

Please can I remind parents of Y1 children the importance of them learning their number bonds (all the different ways of making a number to 10, and then 20) From Year 2 onwards children should be learning the following times tables (to the point they no longer have to even think about the answer):

Y2—2, 5 and 10

Y3—2, 3, 4, 5, 8 and 10

Y4—Up to 12 x 12

Please continue to work on these DAILY with

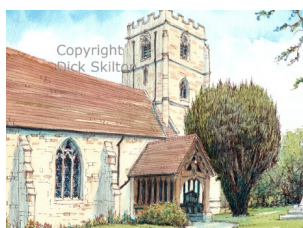
CHILDREN IN NEED

Thank you to all those who supported Children in Need—wearing PJ's in to school and donating money. We raised a fantastic £156. Thank you all so much!



FAMILY SERVICE

It was so lovely to be able to return to our Family Services. Rev Sue Pollard was made to feel very welcome, and was very impressed with the children who did acting and read our prayers. Well done to each of you for living out our vision and demonstrating your "confidence" to talk in front of a whole room of people. Well done!



SALT IN SCHOOL

As a school, we pay for a NHS Speech and Language therapist to come in to work with individuals (every two weeks). We took this decision as we were waiting far too long for referrals and then updates to children's plans etc. We want to be able to offer children a more specific and individualised support, based on their current needs. Therefore, Chloe Jameson works regularly with the children and is providing excellent support for all. If you feel your child would benefit from Speech and Language support, please speak to their class teacher or Mrs S Bryan (our school SENDCO).



ATTENDANCE

The Government's expectation for each child's attendance at school is 96%
Our average attendance is currently 97.3%
Thank you for your support

**EVERY
SCHOOL DAY
COUNTS**